



“Local. Trusted. Serving You: Experience the Cooperative Difference”™ is the theme for this year’s Co-op Month.

Did you know that one out of every four Americans belongs to a co-op? There are more than 29,000 cooperative businesses in the United States that generate more than 2 million jobs and create more than \$74 billion in wages according to a study conducted by the University of Wisconsin Center for Cooperatives, with support from USDA Rural Development. These cooperatives account for more than \$654 billion in revenue. Cooperatives are a key part of their local economy and exist to serve their members who own and control their business.

Membership is open and voluntary. This means anyone can purchase from our cooperative but to share in the profits, you must be a member.

Control of your cooperative’s business is through a Board of Directors elected by the farmer-members. This board hires and guides management and is ultimately responsible to the members.

How many cooperatives can you name? Companies such as Blue Diamond Walnuts, Tree Top, ACE Hardware, Associated Press, Ocean Spray, Cenex, and Land O’Lakes are only a few. Locally, United Power is also a cooperative.

In the July meeting of your cooperative’s Board of Directors, the retirement

## Scholarship Winners

American Pride Co-op recognized three outstanding students for their hard work and accomplishments by awarding each a scholarship. The recipients are Montana Ries, Ryan Shivley and Emily Smith.

Montana Ries was awarded a \$1,500 American Pride Co-op scholarship. Montana is the son of Jim and Barb Ries of Hudson. He graduated from Weld Central High School and will attend Northeastern Junior College where he will pursue a degree in Production Agriculture. Montana was very involved in FFA, Colorado Junior Rodeo Association, Little Britches Youth Association, Adams County Ropers, Little Rockies Loopers, Colorado Professional Rodeo Association, 4-H, football and numerous community activities.

Ryan Shivley, son of Mick and Denene Shivley of Brighton, was awarded a \$1,000 American Pride Co-op Scholarship. Ryan plans to attend Regis University or the University of Northern Colorado and pursue a degree in Business Management. While attending Brighton High School, he was a member of National Honor Society, jazz band, and the golf team where he earned recognition as a three time recipient of the All Conference Academic First Team and twice named to the All State Academic First Team. Ryan also volunteered as a student tutor at Southeast Elementary and with his church.



## 17th Annual Golf Tournament

Ute Creek Golf Club was the site of American Pride Co-op’s 17th Annual Golf Tournament. The day and the course were enjoyed by the 204 golfers. Over \$2,300 was raised through the sale of mulligans, the “Pay-the-Pro” hole, and at the “Tutu” hole. Support from the golfers at these holes fund the scholarships awarded each year to high school seniors.

The tournament winners were:

- Morning: 1st Julie Kerr, Aaron Frei, Harvey Shupe, and Ken Heisel
- 2nd Keith Soustek, Steve Brancucci, Clint Blackhurst, and Roger McCarty
- 3rd Larry Ehrman, Kip Wold, Beau Gorres, and Mitch Anderson
- Afternoon: 1st Jeremy Brady, Bill Shea, Jeff Shea, and David Conner
- 2nd David Eisenach, Alex Eisenach, Kyle Hess, and Trevor Evans
- 3rd John Stinnett, Jeff Stinnett, Mike Lay, and Rob Todd

American Pride Co-op would like to thank the golfers and sponsors for their continued support and hopes to see everyone at next year’s tournament.

of approximately \$329,500 of members' equity was approved. With this action, all of the members' equity earned on purchases before and including 1994 has now been retired. In addition, the action by the board retired approximately 3% of all equity earned from 1995 through 2009. Checks were mailed to American Pride Co-op members in September. We are pleased that the equity program continues to be one of the many strengths of your co-op.

Last December, American Pride Co-op paid approximately \$258,000 in cash patronage refunds to its members for 2009 business, so when these two amounts are combined, a little over \$587,500 in cash has been distributed to members in the last twelve months.

As always, we appreciate your business and we look forward to continuing to serve your needs.

The two American Pride Co-op Scholarships were funded through the support of the sponsors and players in the American Pride Annual Golf Tournament.

The recipient of the Cole Kugel Scholarship is Emily Smith, the daughter of James and Bonnie Smith of Lafayette. She graduated from Centaurus High School and plans to attend Northeastern Junior College and earn a degree in Agriculture Economics. Emily was active in student government, 4-H where she served on the Youth Council and District II 4-H Committee. She served as a math tutor, volunteers as a girl's basketball coach, participated in cross-country and is active in her church.

This scholarship was established and funded by the late Cole Kugel of Longmont.

Congratulations to Montana, Ryan and Emily!

# Propane Season Has Arrived

As we enter the winter heating season, there are a few things you can do to help American Pride Co-op provide you with the best service.

1. Have your address posted clearly; we can't deliver to you if we can't find you.
2. Trim trees around your tank to at least a 12 foot square.
3. Keep weeds and vegetation cleared around your tank. This provides safety and eliminates a fire hazard.
4. Keep area around tank free of vehicles, toys, debris or other tripping hazards.
5. In winter:
  - a. Keep deep snow cleared from around your tank.
  - b. Clear a path to your tank; drivers can't climb over obstacles with a heavy hose in their hands.
6. Tanks need to be accessible 24/7, especially routed customers.

Our drivers will appreciate your help. When it's cold outside, the normally heavy propane delivery hose becomes stiff and is hard to maneuver from the truck to your tank. Possible injury to our drivers can be avoided with these simple maintenance steps prior to the season. Our goal is to provide you with the best service possible and to keep our drivers safe.

We appreciate your business!

## Changes in Regulations

Recently, the regulations for milk replacers that contain the medication Neomycin/Oxytetracycline in combination changed. The combination, used as an aid in either the treatment or prevention of bacterial enteritis (scours), could be fed continuously throughout the pre-weaning period to a two level inclusion rate.

The new regulations allow this combination to be fed at

1. A low level of .05-.10 mg/lb. of calf body weight continuously through pre-weaning or
2. A therapeutic level of 10mg/lb. of calf body weight which can be fed continuously for 7-14 days.

The transition to meet the new regulations will be completed by October 2, 2010. Consumers may still find milk replacers with the old medication levels on store shelves after this date but can continue to feed it until existing inventories are sold. Product manufactured on or after April 2, 2010 will be under the new regulations.

## Online Account Access and Bill Pay Available

American Pride Co-op is pleased to let you know that you can now view your account online. Online access and pay bill by check will enable you to receive up-to-date account information including account balance, view invoices or make your payment. It's easy to get started. Simply follow these steps:

- Visit [www.americanpridecoop.com](http://www.americanpridecoop.com). Go to the View/Pay location.
- Click online statement & account information "Apply Now".
- Fill out the registration form and click "Done".
- We will review your access request.
- When granted, you will receive an e-mail notification that your account/s is accessible.
- Log on any time with secure, password-protected access.

If you have questions, please contact Glen or Rhonda in Customer Service at 303-659-1230.

# Mead Open House

301 3rd Street, Mead  
Saturday, Sept. 18th  
10:00 a.m. to 2:00 p.m.

Special Prices  
Free Food and Door Prizes  
More info 970-535-4450

### Your Co-op Board of Directors . . .

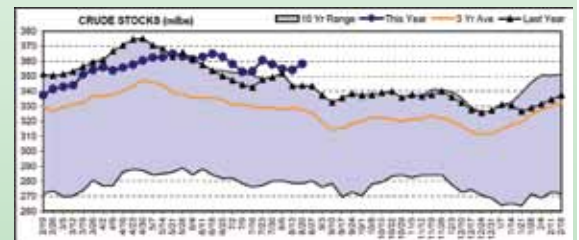
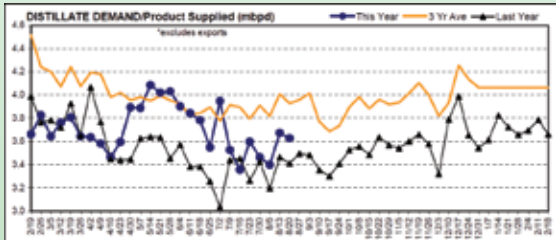
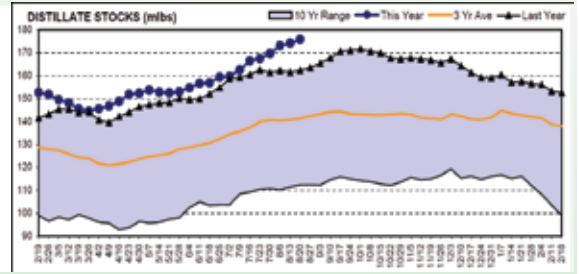
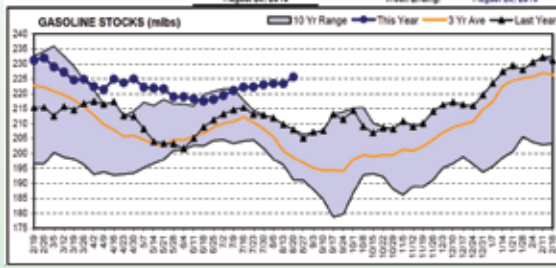
Chris Losh, Chairman  
Chip Marks, Vice Chairman  
Paul Schlagel, Secretary

Kent Kalcevic  
Mike Rademacher  
Jeff Rasmussen  
Bruce Schlagel

Associate Directors: Brian Howard  
Tom Kirkmeyer  
Brett Markham  
Ag Advisor: Tom McBride

# Energy Update September 2010

Weak demand due to a poor economy is the driver in the market as of late. Inventories remain historically high and refineries are still producing at normal levels of around 87% of capacity so the market is range bound. We may see some decline going into winter if nothing else changes. However, there is a "Hurricane Premium" in the market that is keeping it at a level above where we would expect with these high inventories.



As we move through the hurricane season and enter mid-October, I expect this premium to be taken back out of the market and prices will fall some. Then, we will enter a winter weather period where cold will start propping up the market. Bottom line, I don't see a large swing one way or the other until the economy improves or we experience some other major news event.

Historically, one of the best times to contract fuel for the upcoming year is during the last half of October and the end of November. Be patient and watch the market. If we get a pullback during this time frame, I would recommend that you lock in part of your 2011 needs to protect your input costs in the event something triggers the market to move much higher. If weather in the east is normal, we likely will get another opportunity to lock in favorable prices around the first of the year. Again, the economy is the wild card as we have not experienced this level of pullback in many years. If demand stays weak, inventories will continue to build and prices should fall.

Beginning the first part of October, we will begin delivering diesel fuel with winter additive for all diesel deliveries. If you want the additional protection of using winter fuel blended with number 1 diesel, please let us know. Blending with Number 1 adds greatly to the cost as it is currently running 22 cents higher than Number 2. For example, a 30/70 blend will cost an additional 7 cents per gallon. A general rule of thumb is that you will gain 2 degrees lower operability for every 10 percent Number 1, so for 7 cents you will gain only 6 degrees.

Today's additives work very well and are much more economical at a cost of just 2 cents.

**Now at** **ACE**  
**Hardware**

## Engraved ID Tags

For pet collars, keys, backpacks, luggage and 100's of other uses.  
Made while you wait.

**Buy One Get One 1/2 OFF**  
**with coupon**

Expires 10/15/2010

**Don't forget your feathered friends!**

### Birdseed

50-lb. bag.....**\$14.00**

### Sunflower Seed

40-lb. bag.....**\$17.50**

## New Pet Foods

(available at Brighton)

- Canidae
- Holistic Select
- Wellness
- Precise
- Natural Balance
- Nature's Variety Frozen Diet

**That touch of fall is in the air!**  
**Get your supply of Heartland Stove Pellets now!**



**\$10 OFF Pallet**

(60) 40-lb. bags)  
limit 2 pallets

Expires October 31, 2010

**Burn the Best! Forget the Rest!**  
**Available Brighton • Mead**

### General/Corporate Offices

55 West Bromley Lane  
Brighton, CO 80601  
303-659-1230 • 1-800-332-6478

### Branch Locations:

Henderson, CO  
303-659-3643

Mead, CO  
303-776-5015

# Ultra Low Sulfur Diesel Fuel and the New Common Rail Injection Systems

In past newsletters, we have discussed the new common rail injection systems in new model diesel engines and the need to run Ruby FieldMaster diesel fuel in order to prevent injector problems. These new model engines have entered our market and we are starting to see problems arise when Ruby diesel is not used.

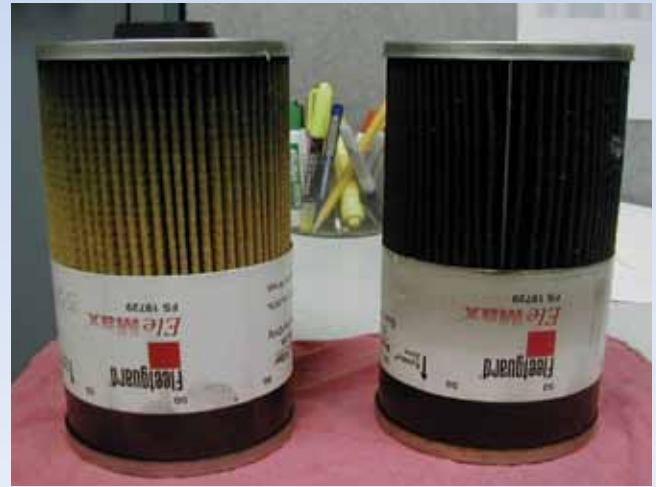
The problem is developing in many cases within the first 100 hours that an engine is used. To date, we have only seen fuel filter plugging and no problems with the injectors themselves. The cause is fuel “cooking” as the fuel is subjected to extremely high injection pressure. This creates a black residue that is transported back to the fuel tank via the bypass line ultimately finding its way to the fuel filter and plugging it. Ruby diesel has a special additive that keeps this fuel from “cooking” and will help clean-up deposits left in the system.

If you have engines that employ the common rail injection system, we recommend you use Ruby FieldMaster or RoadMaster to help keep your equipment running smoothly.

The filter on the right demonstrates deposits left by ULS diesel fuel burned in an engine operating a common rail injection system.

This is only one benefit of using Ruby premium diesel fuel. Along with added lubricity, detergents, stabilizers, water emulsifiers, and improved Cetane for faster starts, Ruby has demonstrated a 4.5% improvement in performance which easily covers the additional cost.

We also offer a low cost warrantee pro-



gram that will cover repairs to your tractor’s injection system. Give Bob Henneman (720-685-1992) or Steve Rulon (720-685-1947) a call and they will explain this great cost effective program that will keep your engines running like new.

Presorted Standard  
U.S. Postage  
**PAID**  
Brighton, CO  
Permit No. 51

55 W. Bromley Lane  
Brighton, CO 80601-3096





## Why Feed Quality Beef Minerals? Because of What Happens If You Don't.

You probably know it's important to feed your cattle a well-balanced mineral supplement, but you might not know why. Cattle with mineral shortages or imbalance do poorly in reproduction, lactation, weight gain, body condition, etc. – all the factors that affect your profitability. But most mineral deficiencies don't show obvious symptoms until too late, and without good records, it's hard to identify a gradual decline in cattle performance.

Buying poor-quality minerals to save money can result in fewer calves, lower weaning weights, or other metabolic problems. That's "penny-wise and pound-foolish."

For example, phosphorous is often called the "Master Mineral" because it affects nearly every metabolic function in cattle. But phosphorous is an expensive ingredient, so it almost always gets cut back in low-cost mineral products. Phosphorous is critical in the reproduction of heifers, cows, and bulls, as well as in the development of growing cattle. That's why it needs to be in the diets of all stockers and replacement heifers.

Purina Wind and Rain formulations provide consistent mineral intake that ensure:

- Bioavailability – easy to absorb
- Palatability – cattle love the taste
- Predictability – cattle consume correct levels and balance of minerals
- Reliability – it's there when your cattle need it.

Wind and Rain Mineral is available in bags or tubs.



## Cooperatives to Stay Unaffected by Policy

In June, Agriculture Secretary Tom Vilsack announced that the initiative to examine antitrust issues in agriculture will not focus on the Capper-Volstead Act. The 1922 law allows farmers to organize in cooperatives without fear of violating antitrust laws. Making his comments before the National Council of Farmer Cooperatives, he said that concern about the act had been "unfortunately generated" by statements by other administration officials.

Earlier this year, USDA and the Justice Department began a series of workshops to address small-farm group concerns that mergers of farm suppliers and commodity buyers have reduced competition at both ends of the food supply chain, resulting in higher input cost and lower sale prices.

The legal issues regarding the interpretation of the Capper-Volstead Act could have had significant implications for agricultural cooperatives

# Tips for Fall Perennial Weed Control



Fall is the best time of year to try to gain control of your perennial weed problems such as bindweed and Canada thistle. The cooler temperatures of fall cause the perennial weeds to begin moving food reserves from the

aboveground plant matter into the roots. This movement greatly increases the translocation, or movement, of herbicides down into the root zone. This helps you achieve much better control of perennial weeds than you could by using the same herbicide in the spring or summer.

There are a few key factors to keep in mind when planning your fall herbicide application. Since herbicides are absorbed through the leaves of the plant, active growth of your target weed is needed for good uptake of herbicides. Perennial weeds should have at least 6 inches of new growth before herbicides are applied. They also must not be overly damaged by any light frosts they may have experienced prior to herbicide application. The plant should have at least 60% green, pliable leaf tissue remaining. When frost temperatures below 28 degrees occur, wait at least 48 hours to evaluate foliage before

spraying. Also, since active growth is needed to translocate herbicides into the root zone, daytime temperatures need to exceed at least 55 degrees for 3 or more days to achieve this herbicide movement.

The question of what herbicide to use is dependant upon what weed you are trying to kill in what type of crop. There have been several new advances in herbicides for perennial weed control in the last few years, so please give us a call in our Henderson (303-659-3643) or Mead (303-535-4450) Agronomy offices. We will be happy to help you determine what herbicide program is best for your situation.



## Ready Your Equipment for Winter Storage

As harvest season draws to a close, it's time to give your equipment a thorough inspection and a complete maintenance routine. After all, the rigors of harvest can put a great deal of stress and strain on your equipment.

Here are some suggestions for your post-harvest maintenance plan:

- ✓ Check equipment for leaks and take note of any maintenance issues.
- ✓ Clean equipment with a high-pressure washer to remove dirt, grease and plant residue.
- ✓ Replace engine oil and filters, service and lubricate the machine.
- ✓ Collect used oil sample for Cenex® LubeScan™ analysis.
- ✓ Check for worn belts and replace if necessary.
- ✓ Check hoses, look for oil leaks.
- ✓ Check coolant level, drain and flush radiator, refill if necessary.
- ✓ Check hydraulic lines, hoses, seals and connections for oil leaks. Repair as needed.
- ✓ Collect used hydraulic fluid sample for Cenex® LubeScan™ analysis.
- ✓ Check transmission fluid level. Drain and refill if necessary, and add new filters.
- ✓ Fill fuel tanks with Cenex® quality fuel.
- ✓ Disconnect the battery ground cable to avoid corrosive buildup. Clean contacts and coat with protective lubricant.
- ✓ Remove any rust, check for scratches, and apply touch-up paint.
- ✓ Apply wax to protect it from the elements.
- ✓ Check tire pressure.

Visit American Pride Co-op today for more information on Cenex® fuels and lubricants, as well as post season maintenance.

